



KINAX 2W2-SSI
Capacitive Absolute Encoder
Single-turn with SSI Interface

KINAX 2W2-SSI

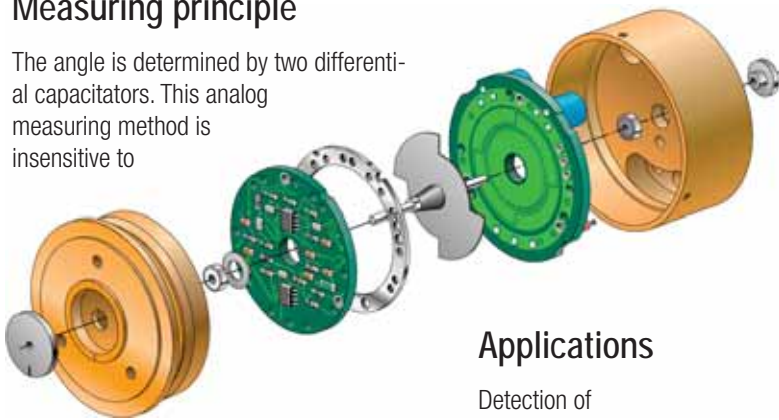
Absolute encoder single-turn

Advantages

- Capacitive measurement method
- Contact-free and non-wearing
- Robust and insensitive to interference
- Sense of rotation and zero position adjustable
- High degree of data safety by gray coding and parity check
- Universal in use with the most varied control systems

Measuring principle

The angle is determined by two differential capacitors. This analog measuring method is insensitive to



shock, vibration, magnetic fields and is superior to optical methods in rough environment. The shaft is fully rotatable without any mechanical stops.

Mechanics

- Flange and housing of light metal
- Shaft of stainless steel
- Precision ball bearing with cover disk

Electronics

- Reverse polarity protection
- Protection against overvoltage peaks
- Highly integrated circuit in SMD technology

Applications

Detection of

- Angles
- Path lengths, distances
- Inclinations
- Differences between two or several axes



KINAX 2W2-SSI as an assembly device



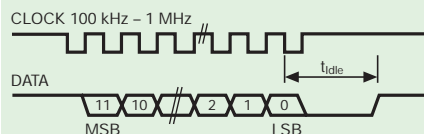
KINAX 2W2-SSI assembled in an attachment housing for apparatus engineering



KINAX 2W2-SSI assembled in a robust housing for heavy machines and ship-building

Technical data (provisional)

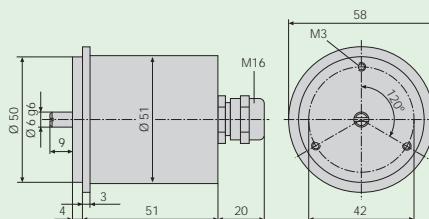
Resolution: 1024 steps per rotation (10 bit)
 Accuracy: 0.3°
 Coding: Gray/binary with optional parity check
 Meas. frequency: 0.5 kHz
 Interface: SSI (RS422/RS485)



Power supply: 24 VDC (8 – 36 VDC)
 20 mA at 24 VDC
 SSI clock rate: 100 kHz to 1 MHz
 Monoflop time: 20 µs
 Interfer.emission: EN 61000-6-4
 Interfer.immunity: EN 61000-6-2

Housing: Ø 48 mm
 Ingress protect.: IP 00, IP 43, IP 66 depending on housing
 Shaft: Ø 2, 6 or 19 mm
 Torque: 2 mm shaft <0.001 Ncm
 6 mm shaft <0.03 Ncm
 Shaft load: axial <16 N
 radial <83 N
 Revolutions: max. 10 000 min⁻¹
 Operating temp.: -20...+85 °C
 Air humidity: max. relative humidity 95% non-dewing

Dimensional drawing assembly device



Camille Bauer Ltd
 Aargauerstrasse 7
 CH-5610 Wohlen / Switzerland
 Phone: +41 56 618 21 11
 Fax: +41 56 618 24 58
 e-Mail: info@camillebauer.com
 www.camillebauer.com