

SINEAX DME 450

Multi-functional power transducer
for electronic current and voltage transformers

SINEAX DME 450

Multi-functional power transducer for electronic current and voltage transformers

Features/benefits:

- Precise acquisition of low voltage signals: no errors due to additional converters
- The ranges and the measured variables can be configured locally
- Selection of all the important variables of three-phase systems: e.g. U, I, P, Q, S, f, $\cos\varphi$, $\sin\varphi$, LF
- Output of the measured values via 4 analog and 2 digital outputs
- Display of all the measured variables with the optional display unit (via the programming interface)



2 plug connectors (9-pin D-SUB) each for 3 low voltage signals from electronic current and voltage transformers.



The RS 232 programming interface also supports the connection of the SINEAX A200 display unit.

Versatile and precise measurement

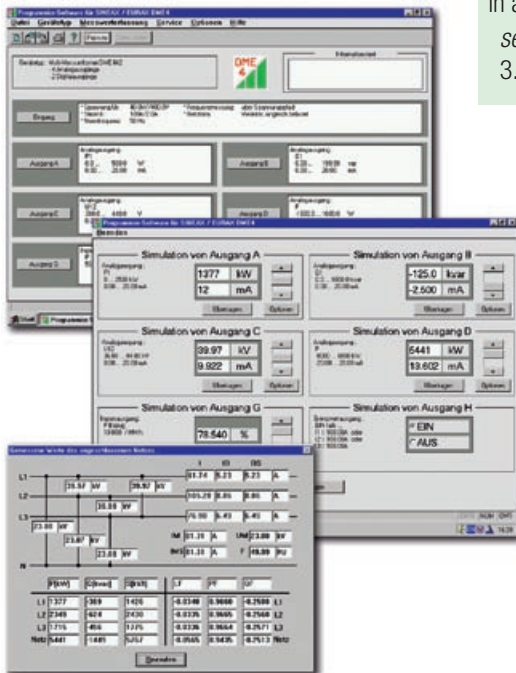
Up to 6 low voltage signals from electronic current and voltage transformers (in accordance with IEC/EN 60044-7 and 60044-8) are directly connected and precisely measured. All the important measured variables, energy counters, and average and max./min. values are available. These form the basis for the comprehensive assessment and analysis of the electrical power system.

Outputs

The output of the measured values is via 4 analog outputs (DC current/voltage) and 2 digital outputs (e.g. limits).

Simple and universal

The easy to use DME PC software supports, among others, the configuration of the device and reading the measured values.



Display windows of the DME PC software

Technical data (provisional)

Housing, connections

Top-hat rail housing T24:
150 x 87.5 x 124 mm (H x W x D)

Inputs:

1 plug connector (9-pin D-SUB) for each 3 U or I inputs, earthing via the top-hat rail

Outputs, power supply:
screw terminals

Programming:
Front socket (RS232)

Measurement inputs

electr. current transformer I:
in accordance with IEC 60044-8, quantity 3

sec. measurement voltage:
22.5 mV...2.25 Vrms, 50 Hz, $R_i \geq 20 \text{ k}\Omega$

electr. voltage transformer U:
in accordance with IEC 60044-7, quantity 3

sec. measurement voltage:
3.25/ $\sqrt{3}$ Vrms, 50 Hz, $R_i = 1 \text{ M}\Omega$

Measured variables

Current / voltage (rms), active, reactive, and apparent power, frequency, active and reactive power factor, energy counters, average and max./min. values

Accuracy

Depending on the application up to class 0.2

Outputs

4 analog outputs:
 $\pm 20 \text{ mA}$, $\pm 10 \text{ VDC}$

2 digital outputs:
DIN 43 864

Power supply

24-60 VAC/DC or 85-230 VAC/DC

Printed in Switzerland • Subject to change without notice • Edition 02.06

 **CAMILLE BAUER**

Rely on us.

Camille Bauer AG
Aargauerstrasse 7
CH-5610 Wohlen / Switzerland

Phone: +41 56 618 21 11
Fax: +41 56 618 35 35

e-Mail: info@camillebauer.com
www.camillebauer.com